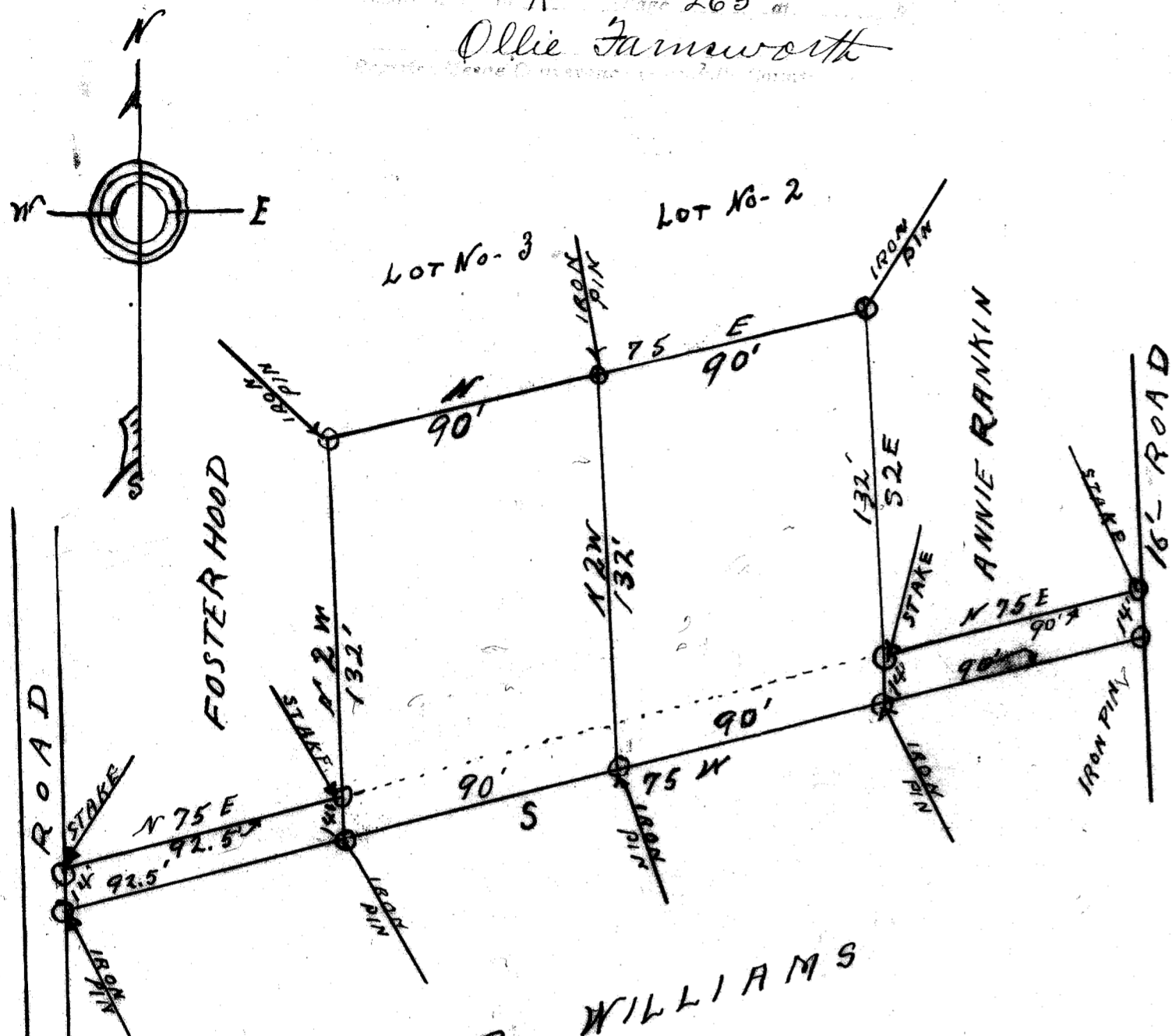


#10860 13 Oct 44

Page 265

Ollie Farnsworth



192
32
60

132
96
26

194  
23

STATE OF SOUTH CAROLINA  
COUNTY OF GREENVILLE.

Scale: One inch equals Fifty feet.

The above plat represents Two Lots of land and a 14' x 92.5' strip of land taken from the southern portion of a lot known as the "Foster Hood" lot --- and a 14' x 90' strip of land taken from the southern portion of a lot known as the "Annie Rankin" lot.

The two lots and the two strips have the bearings, distances, location and bounds as above shown by plat.

Surveyed by J. A. Pickens Oct. 9, 1944 for Mr. J. A. Carson.

J. A. Pickens

205